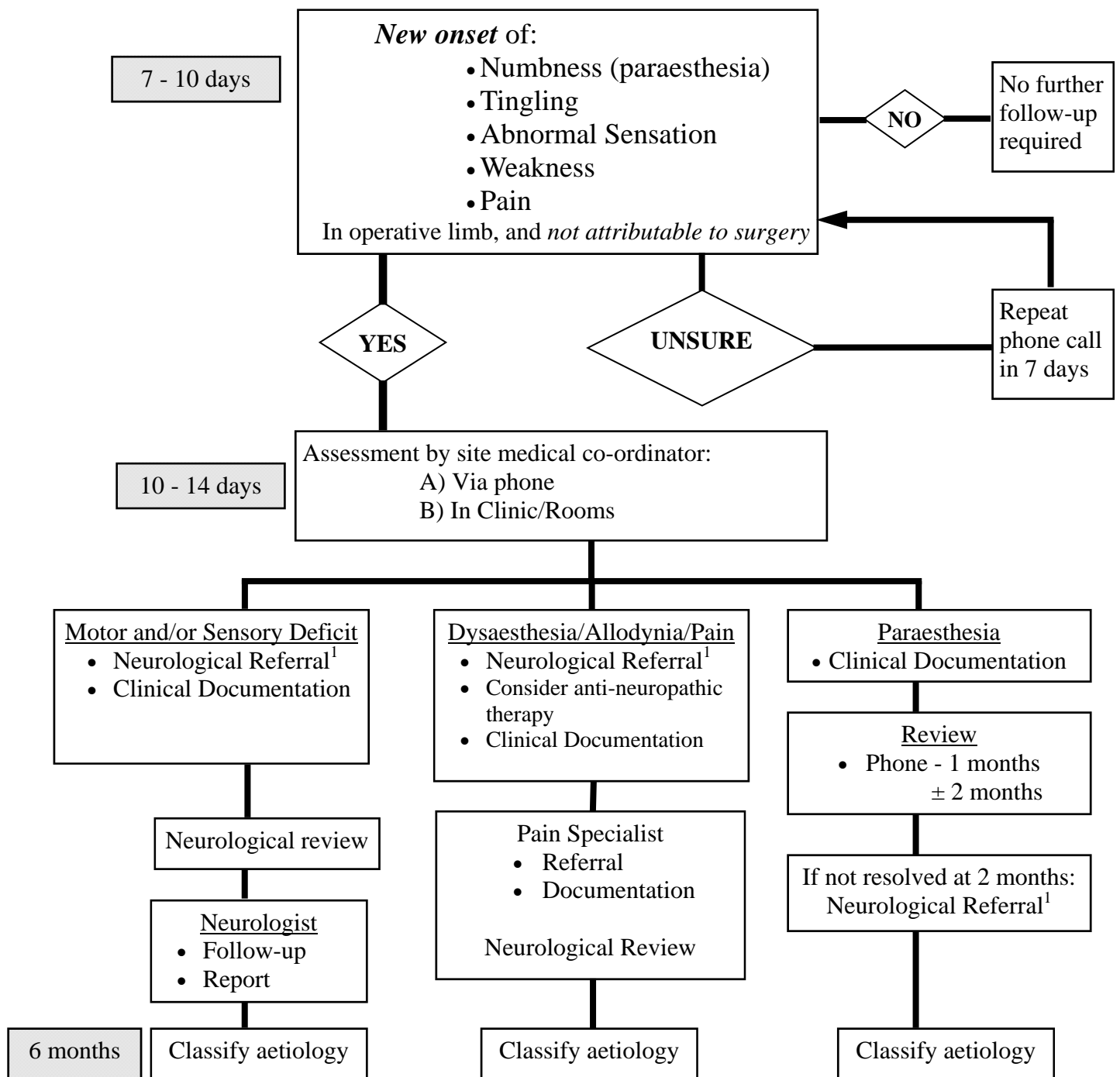


Pathway for Neurological follow-up, referral and investigation

Use in conjunction with the "Delayed Follow-up Definitions" page.



¹Neurological Referral

- Referral to neurologist with experience in peripheral neuropathy is essential
- Clinical Examination
- Nerve Conduction Studies
- If indicated:
 - ⇒EMG
 - ⇒Imaging (eg CT, MRI)
 - ⇒Other investigations
- Documentation

Emphasis on early referral/investigation